

# Port Adelaide Enfield School Holiday Guide April 2008

## Cruises

### Dolphin Explorer

Cruises depart from Berth 2, next to the Lighthouse, Black Diamond Square, Port Adelaide  
Tel: 8447 2366 Mobile: 0418 832 068  
Website: [www.dolphinexplorer.com.au](http://www.dolphinexplorer.com.au)  
Cruise times: Phone for bookings & cruise times

### Port Princess Dolphin Cruises

Cruises depart from Queens Wharf Marina, next to the Lighthouse, Port Adelaide  
Tel: 8243 2757 Mobile: 0418 817 837  
Website: [www.portprincess.com.au](http://www.portprincess.com.au)  
Cruise times: Phone for bookings & cruise times

## Museums

### Enfield Heritage Museum

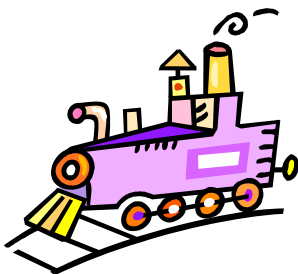
Sunnybrae Farm, Gallipoli Grove, Regency Pk  
Tel: Enquiries / Bookings - 8340 0962  
Open: 1pm to 4pm – Wed, 9am to 12noon – Sat

### National Military Vehicle Museum

252 Commercial Road, Port Adelaide  
Tel: 8341 3011  
Website: [www.military-vehicle-museum.org.au](http://www.military-vehicle-museum.org.au)  
Open: 10am to 4pm – Sundays & Public Holidays (closed Christmas Day)

### National Railway Museum

Lipson Street South, Port Adelaide  
Tel: 8341 1690 Website: [www.natrailmuseum.org.au](http://www.natrailmuseum.org.au)  
Open: 10am to 5pm – daily (closed Christmas Day)

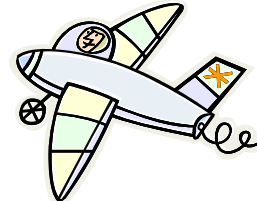


### Port Adelaide Historical Society Austbuilt Maritime Museum

95 Fletcher Road, Peterhead  
Tel: (08) 8447 6669  
Open: 2pm to 4pm – Wednesdays & Sundays  
Other times by appointment

### South Australian Aviation Museum

126 Lipson Street, Port Adelaide  
Tel: 8240 1230 Website: [www.saam.org.au](http://www.saam.org.au)  
Open: 10.30am to 4.30pm – daily (closed Christmas Day)



### South Australian Maritime Museum

126 Lipson Street, Port Adelaide  
Tel: 8207 6255 Website: [www.history.sa.gov.au/maritime/maritime.htm](http://www.history.sa.gov.au/maritime/maritime.htm)  
Open: 10am to 5pm – daily (closed Christmas Day)  
*\* phone museum or check website for school holiday program*

### The Australian Museum of Childhood

95 Dale Street, Port Adelaide  
Tel: 8240 5200 or 0407 606 483  
Open: group bookings – minimum of 15 per group

## Seahorses

Check out the amazing world of seahorses; see the Leafy Seadragon - South Australia's marine emblem, then get up close to baby Port Jackson sharks!

### The Seahorse Farm

20 Divett Street, Port Adelaide  
Tel: 8447 7824 Website: [www.saseahorse.com](http://www.saseahorse.com)  
Open: 11am to 4pm – daily (closed Christmas Day)

## BMX Bike Tracks & Skate Parks

*\* open daily during daylight hours \**

### Small Skate Facility

Kopoola Reserve, Kopoola Court, Gilles Plains

### Full Pipe Skate Board Ramp

Regency Park Reserve, Days Road, Regency Park

### Small Skate Facility

Semaphore Foreshore, Semaphore

### BMX Bike Track & 1/2 Pipe Skate Ramp

Roy Marten Reserve, Military Road, Taperoo

### BMX Bike Track

Thomas Turner Reserve, Nelson Road, Valley View

## Films

### Parks Theatre Complex

Cowan Street, Angle Park

Tel: 8243 5623

Feature films: Wed, 16 Apr – Bee Movie

Wed 23 Apr - Enchanted

Films shown at 10.30 am, 12.30 & 2.30pm

## Golf – Par 3

### Glanville Par 3 Golf Course

Wald Avenue, Semaphore South

Tel: 8449 5000

Open: Daily during daylight hours

### Valley View Par 3 Golf Course

Grand Junction Road, Valley View

Tel: 8263 1863

Open: Daily during daylight hours



## Indoor Rock Climbing

### Vertical Reality Climbing Gym

Rear of 560 North East Road, Holden Hill

Tel: 8266 4090 [www.verticalrealityclimbing.com](http://www.verticalrealityclimbing.com)

Open: 10am to 10pm - Mon to Fri, 12pm to 8pm – Sat

12pm to 6pm – Sun & Public Holidays

## Kart & Skid Car Racing

### Kart Mania & Laser Force Skirmish Centre

1 Port Wakefield Road, Gepps Cross

Tel: 8262 8548 [www.kartmania.com.au](http://www.kartmania.com.au)

Open: Daily during school holidays - 11am to 9pm

## Kayaking

### Blue Water Sea Kayaking

Port River tours depart from Garden Island boat ramp

Bookings essential!

Contact: [bookings@adventure-kayak.com.au](mailto:bookings@adventure-kayak.com.au)

## Kiteboarding

### Red Baron Kiteboarding School

Largs Bay Beach, in front of Largs Bay Sailing Club

Tel: Enquiries / Bookings - 0403 466 766

Website: [www.redbaronkiteboarding.com.au](http://www.redbaronkiteboarding.com.au)

Times: Phone for bookings

## Library School Holiday Activities

*Phone your nearest library for details!*

\* Enfield Tel: 8405 6530

\* Greenacres Tel: 8405 6540

\* Port Adelaide Tel: 8405 6580

\* Semaphore Tel: 8405 6570

\* The Parks Tel: 8243 5691

## Roller Skating

### LeFevre Community Centre

541 Victoria Road, Osborne

Tel: Nathan – 8248 1828

Open: 1pm to 3pm – Tue, 15 & 22, Thu, 17 & 24 Apr 08

## Semaphore Foreshore

### Heritage Steam Train Rides

Tel: National Railway Museum - 8341 1690

Open: Daily from 12pm to 4pm (weather permitting)

### Historic Carousel

Tel: 8248 4698 or 0417 809 421

Open: 12 noon to 5pm – daily (closed Christmas Day)

### Waterslide Complex

*Includes ferris wheel, rides, laughing clowns & mini golf*

Tel: 8449 6323 or 0418 806 019

[www.semaphorewaterslide.com.au](http://www.semaphorewaterslide.com.au)

Open: 11am to 5pm – daily (closed Christmas Day)

## Vacation Care Program

**\* Parks Vacation Care Program (kids 5 to 12)**

*- exciting activities for kids! Tel: 8243 5678*

**\* Parks Youth Service (youth from 12 to 18)**

*- for school holiday program Tel: 8243 5659*



---

Port Adelaide Visitor Information Centre, 66 Commercial Road, Port Adelaide

Open daily from 9am to 5pm (closed Christmas Day) – Tel: 8405 6560

Website: [www.portenf.sa.gov.au](http://www.portenf.sa.gov.au)